

MUSIC SAMPLES
 from
 Pan's Labyrinth Lullaby
 from Pan's Labyrinth
 by Javier Navarrete
 arranged for harp by Stephanie Bennett

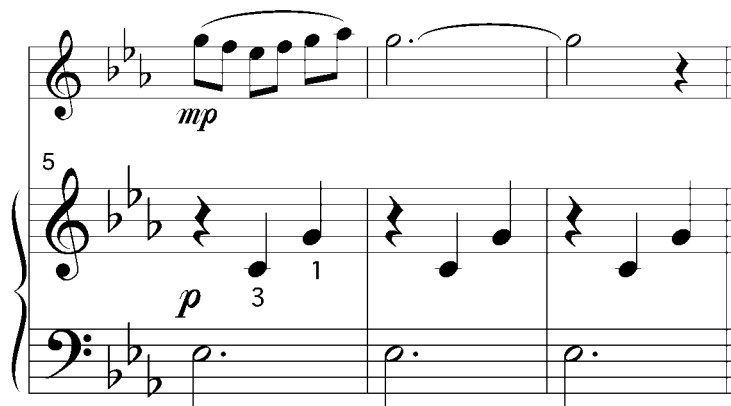
This beautifully poignant lullaby, originally for piano and violin, was composed by Javier Navarrete for the film PAN'S LABYRINTH, which was nominated for an Academy Award for best score in 2006.

(the publication includes ALL SIX ARRANGEMENTS.)

1. Pedal Harp and Violin (or flute) duet

in original key (C minor)

This arrangement is a direct transcription of the piano and violin arrangement in the original film score. The harp part is easy. The violin part is easy for an intermediate violinist.



© 2006 EMI MUSIC PUBLISHING LTD. This arrangement © 2009 EMI MUSIC PUBLISHING LTD.
 All Rights in the U.S. and Canada Controlled and Administered by EMI BLACKWOOD MUSIC INC.
 All Rights Reserved International Copyright Secured Used by Permission

2. Pedal Harp Solo (C minor)

The harp solo is a little more difficult than the harp part of the duet, since both the melody and the accompaniment are played by the harp, and the entire accompaniment has to be accomplished by the left hand.

3. Advanced Lever Harp Solo (C minor)

This is also in the original key as in the film score. The harp needs to be tuned 'with open strings in three flats'. You need to move very quickly to make the four lever changes. The spread-out voicings in the left hand are not very easy.

Set these levers.

Range of strings needed for this arrangement.

4. Intermediate Lever Harp and Violin (or flute) duet (D minor)

Since many lever harpers tune their harps in such a way as to have access to one flat (key of F major/D minor) but not three flats, I have put the next few lever harp arrangements in the key of D minor. Also, D minor is a slightly easier key for violin than C minor, so it is more playable by a beginning (or hobbyist) violinist than C minor. There are two lever changes during the song (moving the C levers).

Set these levers. If your harp doesn't have B levers, tune these two B's down to B flat. You will not have to change the B's during the song.

Range of strings needed for this arrangement



5. Intermediate Lever Harp Solo (D minor)

I've made the left-hand voicings closer together than in the advanced arrangement, so they are a little easier to play. You will need to move C levers, but I have made the left hand just a little simpler than in the advanced lever solo, so that there is more time to move levers. There are three lever changes during the song (moving the C levers).

Set these levers. If your harp doesn't have B levers, tune these two B's down to B flat. You will not have to change the B's during the song.

Range of strings needed
for this arrangement

6. Easy Lap Harp Solo (D minor)

This is the easiest arrangement in this collection, playable on smaller harps. It is written all in treble clef. Notes with stems DOWN are played with the LEFT hand; notes with stems UP are played with the RIGHT hand. The left hand has been slightly simplified.

Range of strings needed
for this arrangement.

Set these levers.

If you have C levers and don't mind moving them, there are three lever changes during the song. However, it is possible to play on a harp with no levers, by way of a slight alteration, which is noted at the beginning of the arrangement.

Order from :
www.harpworld.com/sheetmusic.html
818-377-4085